

2023 – Carbon assessment limited to SiPearl France

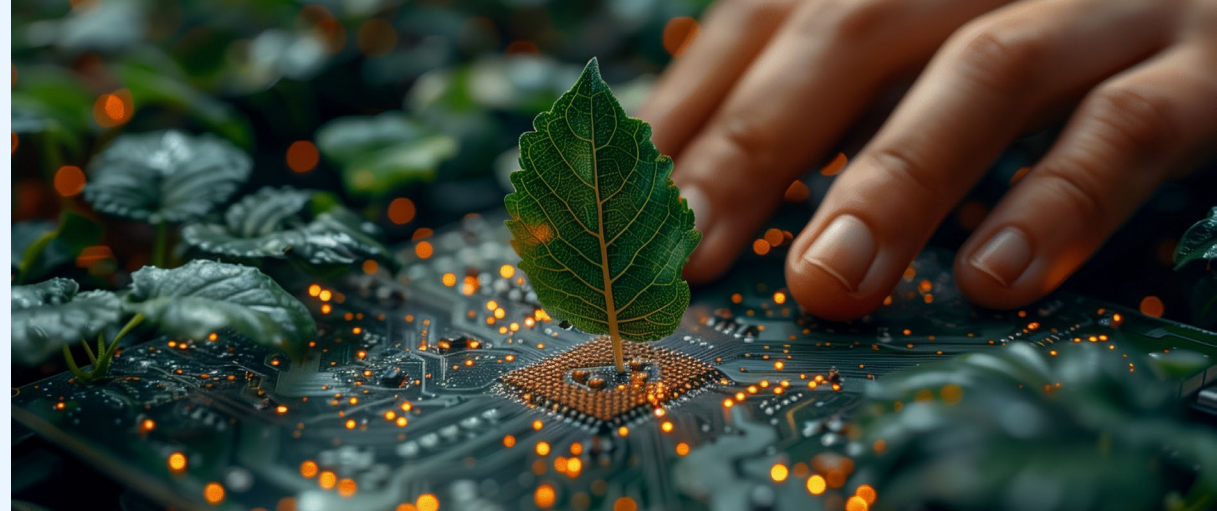
Due to partial funding by Bpifrance, our first carbon assessment was limited to French sites + travel to France by German & Spanish teams

7,816t CO₂e

(50% uncertainty)

60.12t CO₂e

per employee
(basis: 130 employees in France)



Equivalent

The annual emissions of **789**  inhabitants



1,303 round-the-world trips by plane

The combustion of **19,214** 

Actions planned to reduce our carbon footprint

- #1 Training/awareness-raising on energy savings
- #2 Reduce energy use in all premises
- #3 Include carbon/SRE criteria in supplier specifications
- #4 Increase depreciation period from 3 to 4 years for laptops and 3 to 5 years for external monitors
- #5 Replacement on expiry of the internal combustion car fleet with electric cars



Involving **12 SiPearl employees** from all locations in France, the action plan was developed in 3 stages:

1. **Brainstorming** to suggest courses of action by theme, then rank the actions according to the difficulty of implementation and the issues at stake.
2. **Examination** of the most popular courses of action in the form of action sheets in thematic sub-group
3. **Presentation** the work carried out in sub-groups, followed by the formalisation and selection of the main actions.

2024

A carbon assessment for SiPearl group

All locations & each of you will be concerned

France

Maisons-Laffitte (HQ) • Grenoble • Massy • Sophia Antipolis

Germany

Duisburg

Spain

Barcelona

Italy

Bologna

+200
Employees

